



















WHY CHOOSE US?



S***+
FR

★★★★★

Ships From: China Logistics: TNT

I really like this umbrella. It is sturdy, it can be opened or closed with just a press. And more importantly, almost instant dry by just shaking.

24 Dec 2018 02:24

K***t
ES

★★★★★

Color: Black Ships From: China Logistics: TNT

One the metals/ribs broke after one day of use, with just light rain no wind. Very disappointing!

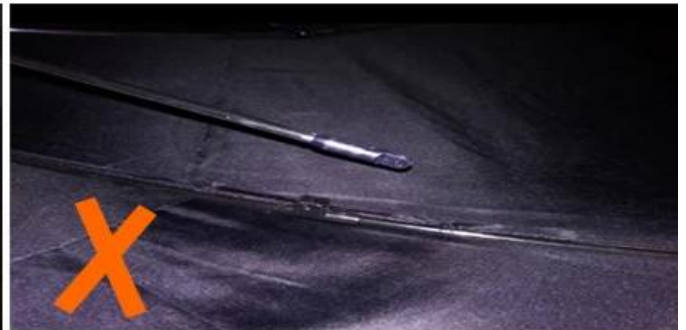
24 Dec 2018 02:24



ours



others



Shaoxing Umbrella Co., Ltd.

Shaoxing Umbrella Co., Ltd. is a professional manufacturer of umbrellas, located in Shaoxing, Zhejiang, China. We have 15 years of experience in the industry. We are an OEM manufacturer and provide various services. Our products are made of high-quality materials and are durable. We also provide OEM services and have a strict quality control system. Our products are certified with REACH and other international standards. We are committed to providing high-quality products and excellent customer service. We are a professional manufacturer of umbrellas and have a strict quality control system. We are committed to providing high-quality products and excellent customer service.



□□□□□□□□ **OEM**

OEM PROCESS



artwork from customer



make the quotation



make the sample for you confirmed place the order



mass production inspection packing



shipment

PRODUCTION PROCEDURES



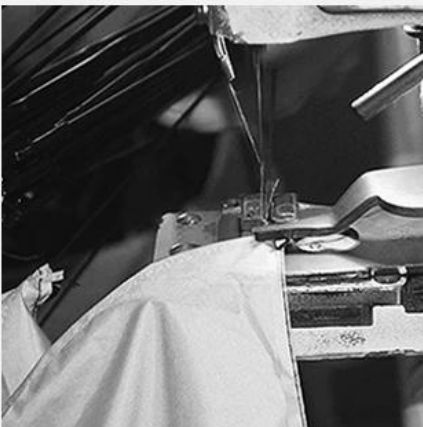
1. EDGE STITCH



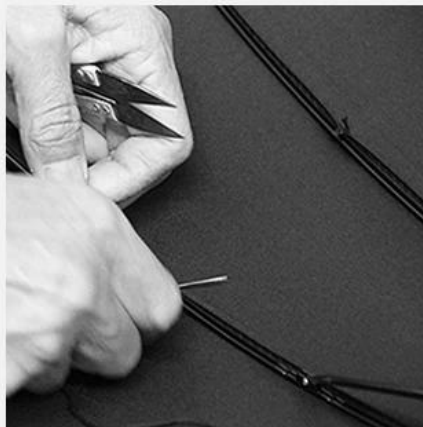
2. CUT FABRIC



3. SEWING



4. TIP ASSEMBLY



5. SEW UP



6. QUALITY CHECK



Quality control QC

24 hours on line

Free design service

Factory production halls

Umbrella sample room

Quick Response...
99.9%
compared with t...
LOTUS UMBRELLA

24 hours on line.

We focus on manufacture umbrella for 19 years, we can do it better, fast.
Customized with low MOQ, Free sample, Free design, Shipping fast, Quick response

Factory production halls

1. 快速反应的订单周期?

Lotus umbrella 专注于伞业19年，拥有完善的生产体系，能够快速响应客户需求。

2. 定制伞的起订量多少? 打样周期多长?

我们提供小批量定制服务，起订量低至500把，打样周期通常为3-5天。

3. 定制伞的价格如何? 是否支持贴牌?

T / T: 预付款 30%, 70% 发货前付清 B / L

4. 如何制定檢驗計畫？

ETD: 25-35 如何制定檢驗計畫？

5. 如何制定檢驗計畫？

I. 如何制定檢驗計畫？ AQL2.5 // 4.0
如何制定檢驗計畫？

如何制定檢驗計畫？ QC 如何制定檢驗計畫？

III 如何制定檢驗計畫？ QC 如何制定檢驗計畫？ AQL 如何制定檢驗計畫？