







Customized Logo  
Printing

# WHY CHOOSE US?



S\*\*\*  
FR



Ships From: China Logistics: TNT

I really like this umbrella. It is sturdy, it can be opened or closed with just a press. And more importantly, almost instant dry by just shaking.

24 Dec 2018 02:24

K\*\*\*  
ES



Color: Black Ships From: China Logistics: TNT

One the metals/ribs broke after one day of use, with just light rain no wind. Very disappointing!

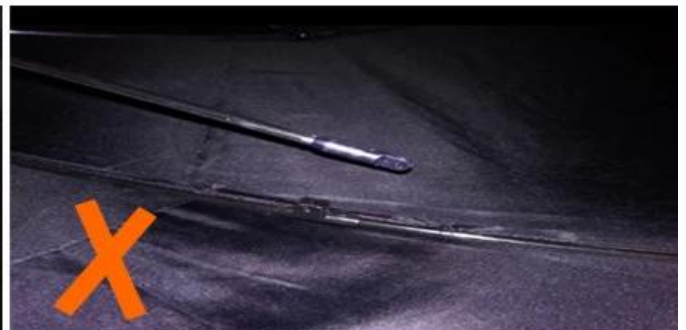
24 Dec 2018 02:24



ours



others



Shaoxing

Shaoxing umbrella factory has been manufacturing umbrellas for over 15 years. We are a professional OEM manufacturer of various styles of umbrellas. Our products are made of high-quality materials and are compliant with REACH regulations. We have a strict quality control system to ensure that our products are of high quality and durable. We welcome inquiries and orders from all over the world.



□□□□□□□□ **OEM**

# OEM PROCESS



artwork from customer



make the quotation



make the sample for you confirmed place the order



mass production inspection packing



shipment

## PRODUCTION PROCEDURES



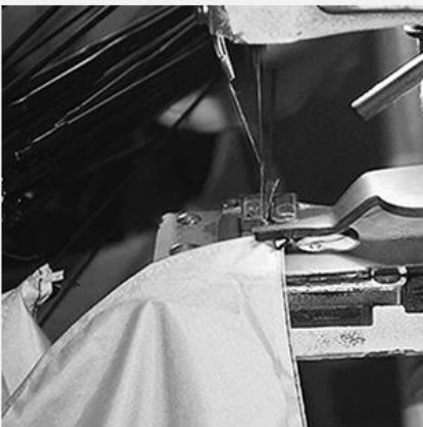
1. EDGE STITCH



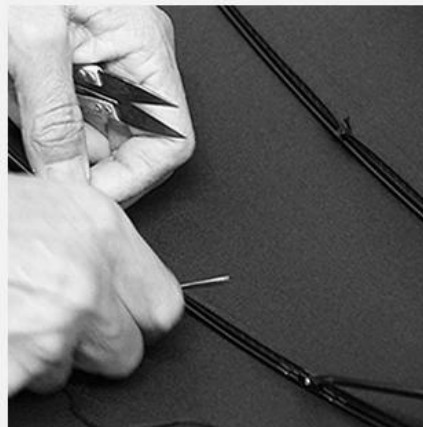
2. CUT FABRIC



3. SEWING



4. TIP ASSEMBLY



5. SEW UP



6. QUALITY CHECK



Quality Control QC

Factory production halls

Free design service

Factory production halls

Umbrella sample room

Quick Response...  
99.9%  
compared with t...  
LOTUS UMBRELLA

24 hours on line.

We focus on manufacture umbrella for 19 years, we can do it better, fast.  
Customized with low MOQ, Free sample, Free design, Shipping fast, Quick response

Factory production halls

1. Free design service?

Lotus umbrella factory, 19 years experience

2. Free sample, Free design, Shipping fast, Quick response?

5 days

3. Customized with low MOQ, Free sample, Free design, Shipping fast, Quick response?

T / T: 30%, 70% B / L

**4. 如何制定檢驗計畫？**

ETD: 25-35 如何制定檢驗計畫？

**5. 如何制定檢驗計畫？**

I. 如何制定檢驗計畫？ AQL2.5 // 4.0  
如何制定檢驗計畫？

如何制定檢驗計畫？ QC 如何制定檢驗計畫？

III 如何制定檢驗計畫？ QC 如何制定檢驗計畫？ AQL 如何制定檢驗計畫？