









discount



## Seller Discount

On all products

Time left until promotion ends: 7d 0h 0m

[Shop Now](#) ▶



All details, please check it as coupon.

# WHY CHOOSE US?



S\*\*\*  
FR

★★★★★

Ships From: China Logistics: TNT

I really like this umbrella. It is sturdy, it can be opened or closed with just a press. And more importantly, almost instant dry by just shaking.

24 Dec 2018 02:24

K\*\*\*  
ES

★★★★☆

Color: Black Ships From: China Logistics: TNT

One the metals/ribs broke after one day of use, with just light rain no wind. Very disappointing!

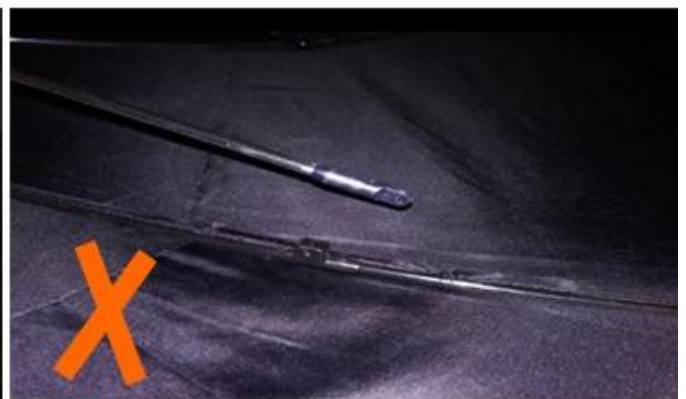
24 Dec 2018 02:24



ours



others



**Shaoxing Lotus Umbrella Co., Ltd is a professional manufacturer of Umbrella in Zhejiang Province, China. We have worked in this field for about 19 years and we offer a variety of custom umbrellas, including time, various sizes, fabric styles and colors of umbrellas, children, umbrellas, bottles You can provide full quality umbrellas which include straight umbrellas, folding umbrellas, golf umbrellas, umbrellas, beach umbrellas, promotional umbrellas. We also have a professional design team and provide personalized and free design services.**



# OEM PROCESS

01



artwork from  
customer

02



make the  
quotation

03



make the sample  
for you confirmed  
place the order

04



mass production  
inspection packing

05



shipment

## PRODUCTION PROCEDURES



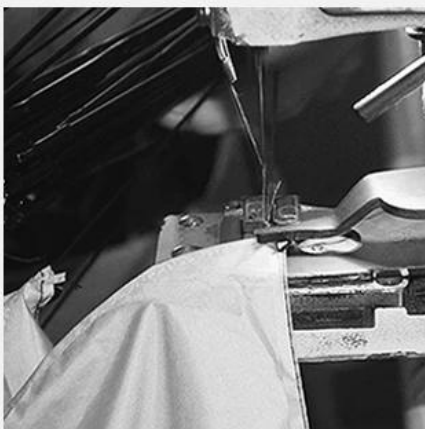
1. EDGE STITCH



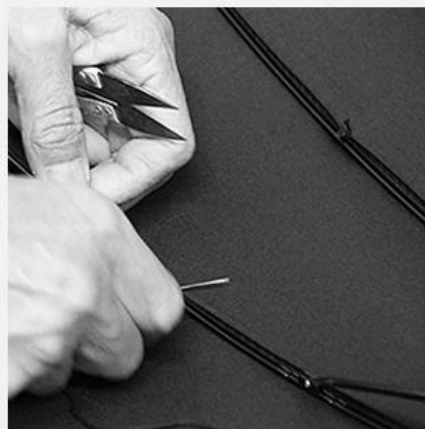
2. CUT FABRIC



3. SEWING



4. TIP ASSEMBLY



5. SEW UP



6. QUALITY CHECK

# BUSINESS PROCESS

LOTUS UMBRELLA GROW UP WITH YOU



2016  
Company History

2015  
Company History

2014  
Company History

2012  
Company History

2010  
Company History

2008  
Company History





EXHIBITION



EXHIBITION

**Packaging and shipping**



**our service**



**frequently asked Questions**

**1. Are you a manufacturer or a trading company?**

Of course, we are a professional manufacturer with more than 19 years experience.

**2. Can I provide free samples? Sampling time**

The first time he collaborated, he would collect a small sample fee for the cost of setting up the project. Your order will be returned upon confirmation. You can send the sample within 5 days.

**What are the payment terms?**

T / T: 30% deposit, 70% balance against the copy of B / L

**How long does it take to produce?**

ETD: within 25-35 days after order confirmation

**5. How do we manage the quality in the factory?**

I. We have strict quality control from the approval of each material until the end of the umbrella. In general, see AQL 2.5 // 4.0.

B. Samples made for approval from vendors before production We carry out strict online quality control in every production process.

lii When the item is packed in a box, our quality control will use AQL to inspect the product at random and send the report.