

discount



Seller Discount On all products

Time left until promotion ends: 7d 0h 0m

[Shop Now](#) ▶



10%off

All details, please check it as coupon.

Detailed photos













WHY CHOOSE US?



5***
FR

★★★★★

Ships From: China Logistics: TNT

I really like this umbrella. It is sturdy, it can be opened or closed with just a press. And more importantly, almost instant dry by just shaking.

24 Dec 2018 02:24

4***
ES

★★★★★

Color: Black Ships From: China Logistics: TNT

One the metals/ribs broke after one day of use, with just light rain no wind. Very disappointing!

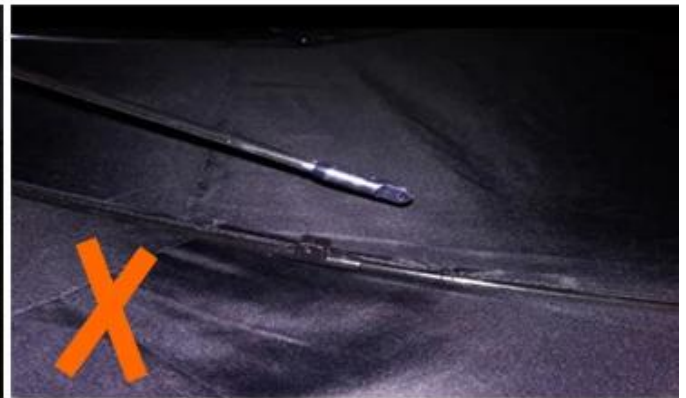
24 Dec 2018 02:24



ours



others



company information

About us Lotus Umbrella:

Shaoxing Lotus Umbrella Co., Ltd is a professional manufacturer of Umbrella in Zhejiang Province, China. We have worked in this field for about 19 years and offer

[illegible]

OEM PROCESS



artwork from
customer



make the
quotation



make the sample
for you confirmed
place the order



mass production
inspection packing



shipment

PRODUCTION PROCEDURES



1. EDGE STITCH



2. CUT FABRIC



3. SEWING



4. TIP ASSEMBLY



5. SEW UP



6. QUALITY CHECK

BUSINESS PROCESS

LOTUS UMBRELLA GROW UP WITH YOU



2016
Company History

2015
Company History

2014
Company History

2012
Company History

2010
Company History



2008
Company History



EXHIBITION



EXHIBITION

Packing and delivery



our service



Free design service



Factory production halls



Umbrella sample room



24 hours on line.

We focus on manufacture umbrella for 19 years, we can do it better, fast.
Customized with low MOQ, Free sample, Free design, Shipping fast, Quick response

frequently asked Questions

1. Are you a manufacturer or a trading company?

Of course, we are a professional manufacturer with more than 19 years experience.

2. Can I provide free samples? Sampling time

The first time he collaborated, he would charge a small sample fee for the cost of establishing the project. Your order will be returned to confirmation. You can send the sample within 5 days.

What are the payment terms?

T / T: 30% deposit, 70% balance against the copy of B / L

How long does it take to produce?

ETD: within 25-35 days after order confirmation

5. How do we manage the quality in the factory?

I. We have strict quality control from the approval of each material until the end of the umbrella. In general, see AQL 2.5 // 4.0.

B. Samples are made for approval from the manufacturer before production. We carry out strict online quality control in each production process.

Iii When the item is packed in our quality control box, AQL will be used to inspect the product at random and send the report.