

## discount

---



### Seller Discount

On all products

Time left until promotion ends: 7d 0h 0m

[Shop Now ▶](#)





All details, please check it as coupon.

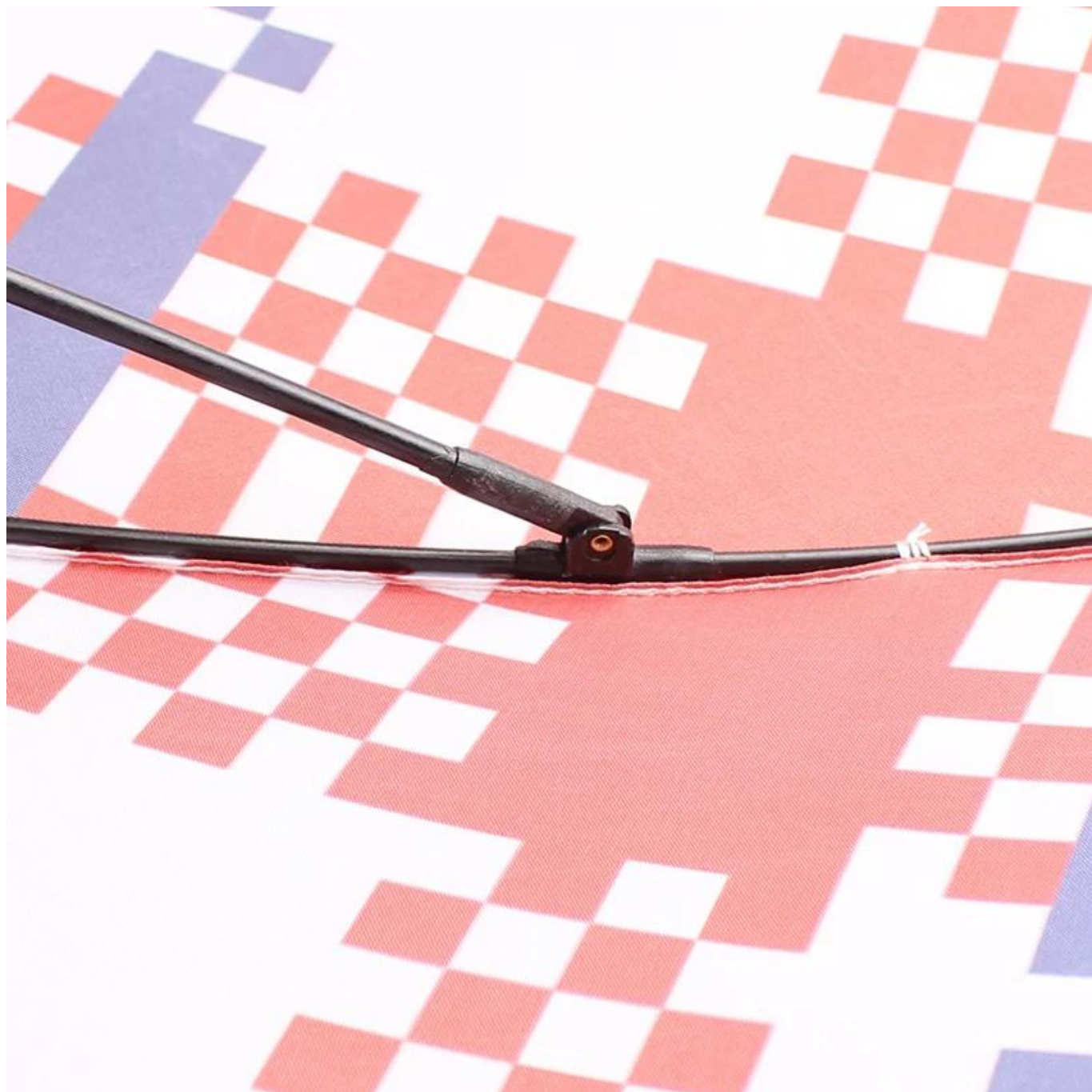
---

## Detailed photos













# WHY CHOOSE US?



5\*\*\*  
FR

★★★★★

Ships From: China Logistics: TNT

I really like this umbrella. It is sturdy, it can be opened or closed with just a press.  
And more importantly, almost instant dry by just shaking.

24 Dec 2018 02:24

4\*\*\*  
ES

★★★★

Color: Black Ships From: China Logistics: TNT

One the metals/ribs broke after one day of use, with just light rain  
no wind. Very disappointing!

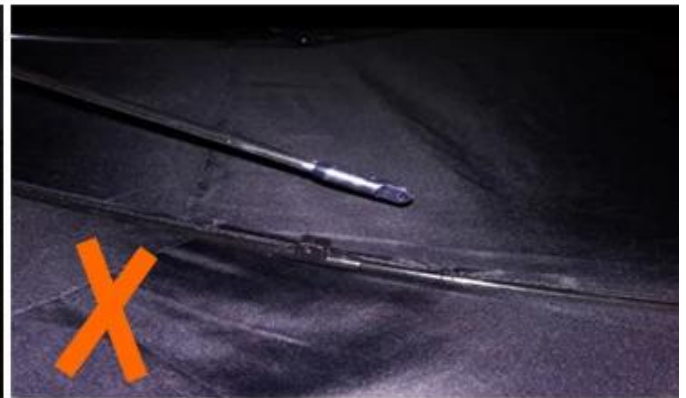
24 Dec 2018 02:24



ours



others



## company information

### About us Lotus Umbrella:

Shaoxing Lotus Umbrella Co., Ltd is a professional manufacturer of Umbrella in Zhejiang Province, China. We have worked in this field for about 19 years and offer

[illegible]

# OEM PROCESS



artwork from  
customer

make the  
quotation

make the sample  
for you confirmed  
place the order

mass production  
inspection packing

shipment

## PRODUCTION PROCEDURES



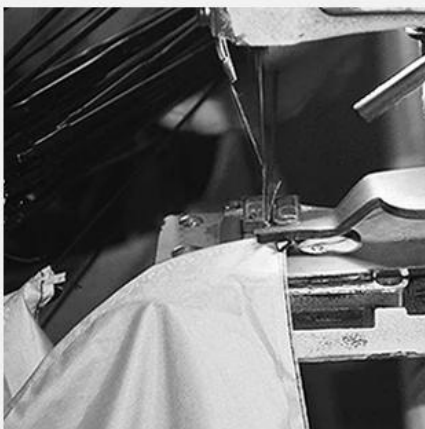
1. EDGE STITCH



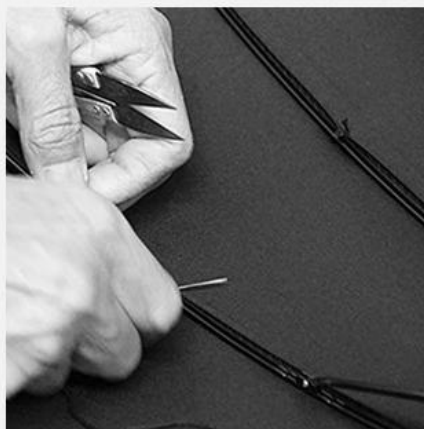
2. CUT FABRIC



3. SEWING



4. TIP ASSEMBLY



5. SEW UP



6. QUALITY CHECK

# BUSINESS PROCESS

LOTUS UMBRELLA GROW UP WITH YOU



2016  
Company History

2015  
Company History

2014  
Company History

2012  
Company History

2010  
Company History



2008  
Company History



EXHIBITION



EXHIBITION

## Packaging and shipping

---



## our service

---



Free design service



Factory production halls



Umbrella sample room



24 hours on line.

We focus on manufacture umbrella for 19 years, we can do it better, fast.  
Customized with low MOQ, Free sample, Free design, Shipping fast, Quick response

## Frequently Asked Questions

### 1. Are you a manufacturer or a trading company?

Of course, we are a professional manufacturer with more than 19 years experience.

### 2. Can I provide free samples? Sampling time

The first time he collaborated, he would charge a small sample fee for the cost of establishing the project. Your order will be returned for confirmation. You can send the sample within 5 days.

### What are the payment terms?

T / T: 30% deposit, 70% balance against the copy of B / L

### How long does it take to produce?

ETD: within 25-35 days after order confirmation

### 5. How do we manage the quality in the factory?

I. We have strict quality control from the approval of each material until the end of the umbrella. In general, see AQL 2.5 // 4.0.

B. Samples are made for approval from the manufacturer before production. We carry out strict online quality control in each production process.

Iii When the item is packed in our quality control box, AQL will be used to inspect the product at random and send the report.