



**Seller Discount**  
On all products

Time left until promotion ends: 7d 0h 0m

[Shop Now ▶](#)

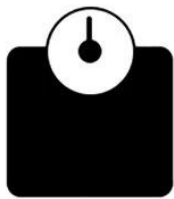


All details, please check it as coupon.

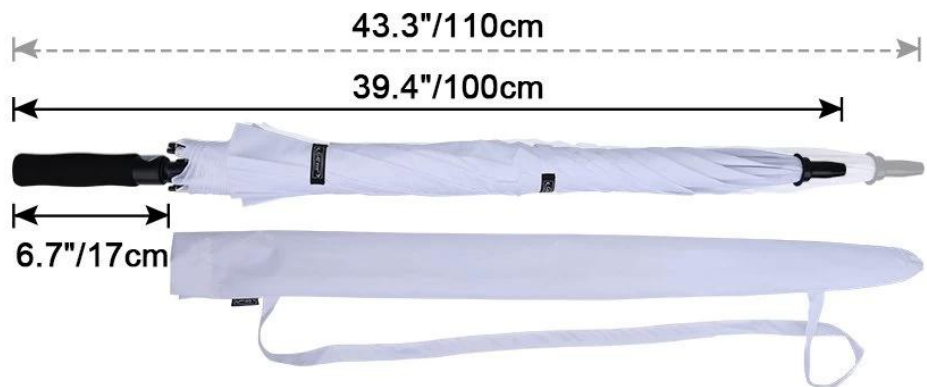
□□□□

□□□□	HH-S236
□□□	30□□□×8□□
□□□□□□	□□□□□/□□□□□/□□□□□□□□□□□□□□
□□□□	□□□□□/□□□□□□□□□□□□□□□□□/□□
□□□□□□	□□□□□□□□□□□□□□□□□□
□□	□□□□□□□□□□□□□□□□□□
□□□□□	1□/ Opp
□□□	□□□□□□□□□□□□□□□□□□□□□□□□
□□□□	□□□□□□□□□□□□□□□□□□□□□□□□
□□	□□□□□□□□
MOQ	2000□
□□□□□□	3-7□
□□	□□□□□□30□





62":160LB  
68":161LB





## AUTO OPEN CANOPY

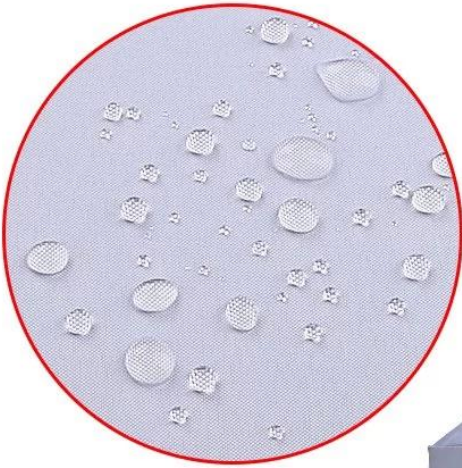
With a push button,  
easy and quick to open with one hand.



## NON-LIP FOAM RUBBER HANDLE

The engineering handle provides a better grip feeling and reduce wrist fatigue.

# Water Repellent Fabric



**Double-canopy design**  
**VIRTUALLY WINDPROOF**



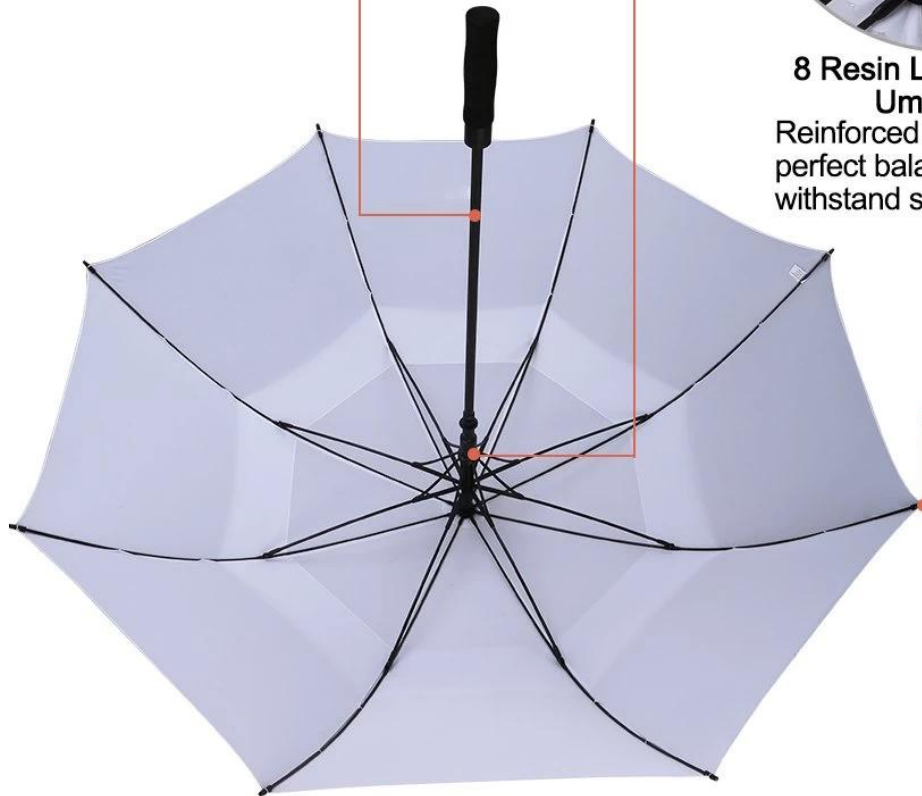
The double-canopy design creates a vent during where wind can pass through, making the umbrella much easier to handle in harsh conditions



**Fiberglass Shaft**  
More Lightweight than iron shaft,  
rustless and not easy to bend.



**8 Resin Lotus Honeycomb  
Umbrella Stand**  
Reinforced Fiberglass Ribs, provides  
perfect balance of strength and flexibility  
withstand strong wind, heavy downpour.



**Strong Umbrella Bead**  
Injection technics, molding in  
one, not easy to deformation  
and take off the line.

# WHY CHOOSE US?



S\*\*\*  
FR

★★★★★

Ships From: China Logistics: TNT

I really like this umbrella. It is sturdy, it can be opened or closed with just a press. And more importantly, almost instant dry by just shaking.

24 Dec 2018 02:24

K\*\*\*t  
ES

★★★★★

Color: Black Ships From: China Logistics: TNT

One the metals/ribs broke after one day of use, with just light rain no wind. Very disappointing!

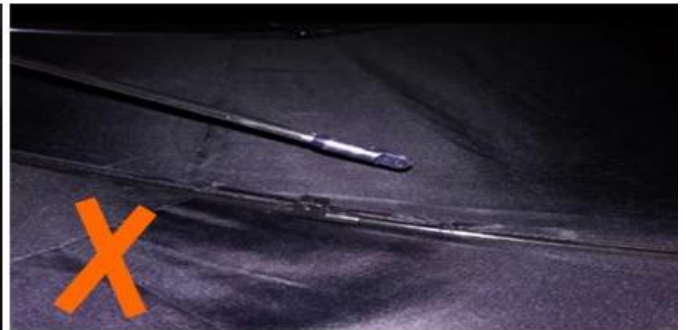
24 Dec 2018 02:24



*ours*



*others*



15  
OEM  
REACH





OEM□□□□

# OEM PROCESS



01  
artwork from customer



02  
make the quotation



03  
make the sample for you confirmed place the order



04  
mass production inspection packing



05  
shipment

## PRODUCTION PROCEDURES



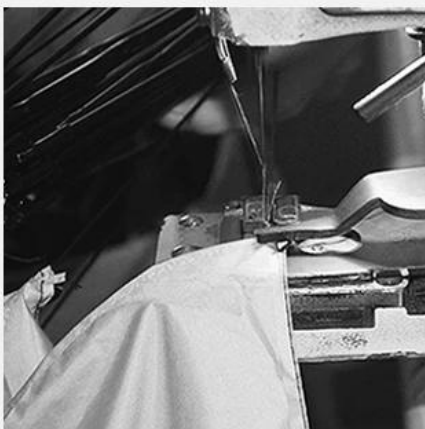
1. EDGE STITCH



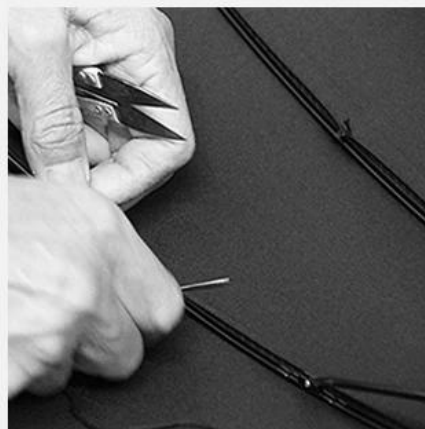
2. CUT FABRIC



3. SEWING



4. TIP ASSEMBLY



5. SEW UP



6. QUALITY CHECK





ETD 25-35

## 5. 5.1

I. AQL 2.5 // 4.0

II. QC

III. QC AQL