

3ply



# 3 Layers

**Skin-friendly composite fiber**

**High density filter layer**

**Non-woven fabric**



# How to wear a mask correctly ?



Distinguish the front and back of the mask and up and down, then wash your hands

Note: The part with the metal strip should be above the mask



After wearing the mask , squeeze the metal strips on both sides of the bridge of the nose.



Then stretch the mask down to cover the nose and mouth so that the mask does not leave wrinkles.



### Magic nose bar

Adjust the face fit to ensure the protection effect.



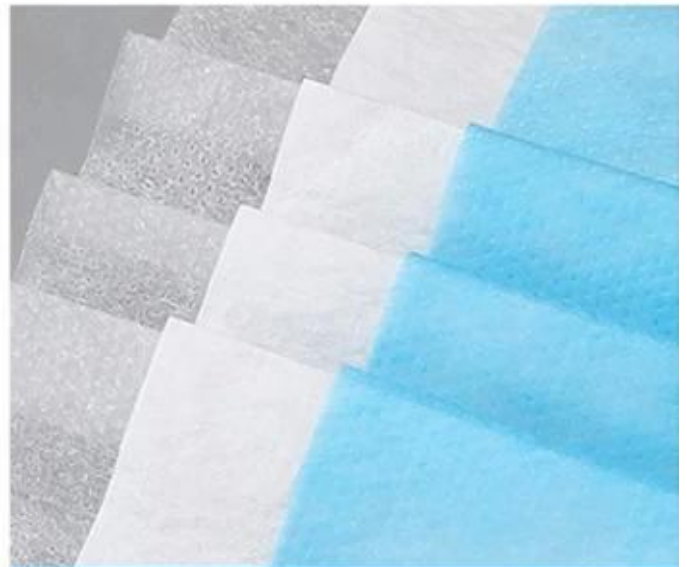
### Elastic elastic belt

Loose design, Comfortable to wear



### Folding design

Three fold, large space comfortable



### Three layer filter design

Use non-woven fabric, melt blown cloth and other filter materials.

Adjustable nose clip

Three Layer Design



Breathable and comfortable

Enhanced Protection



Shaoxing Lotus Umbrella Co.,Ltd

Shaoxing Lotus Umbrella Co.,Ltd Amberla 19  
Shaoxing Lotus Umbrella Co.,Ltd Amberla 19  
Shaoxing Lotus Umbrella Co.,Ltd Amberla 19

# WHY CHOOSE US?



S\*\*\*  
FR

★★★★★

Ships From: China Logistics: TNT

I really like this umbrella. It is sturdy, it can be opened or closed with just a press.  
And more importantly, almost instant dry by just shaking.

24 Dec 2018 02:24

K\*\*\*  
ES

★☆☆☆☆

Color: Black Ships From: China Logistics: TNT

One the metals/ribs broke after one day of use, with just light rain  
no wind. Very disappointing!

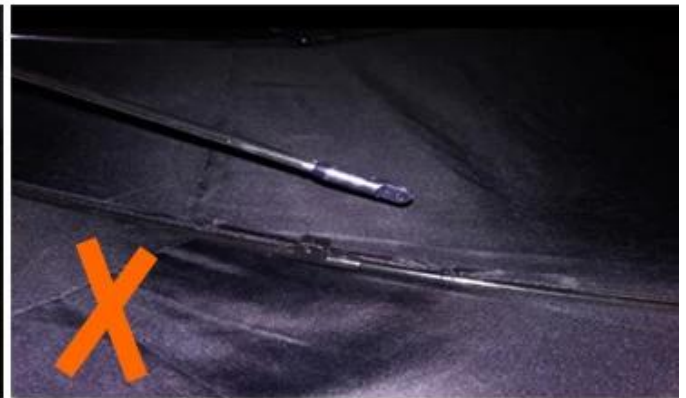
24 Dec 2018 02:24



ours



others



# OEM PROCESS

01



artwork from  
customer

02



make the  
quotation

03



make the sample  
for you confirmed  
place the order

04



mass production  
inspection packing

05



shipment

## PRODUCTION PROCEDURES



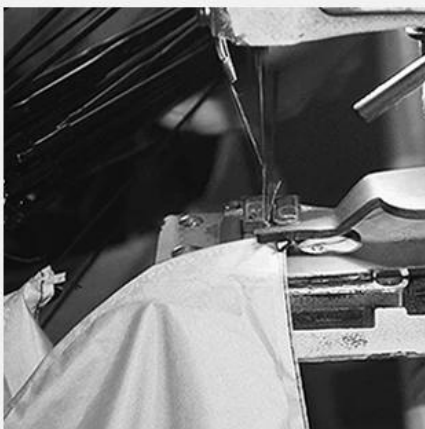
1. EDGE STITCH



2. CUT FABRIC



3. SEWING



4. TIP ASSEMBLY



5. SEW UP



6. QUALITY CHECK

# BUSINESS PROCESS

LOTUS UMBRELLA GROW UP WITH YOU



2016  
Company History

2015  
Company History

2014  
Company History

2012  
Company History

2010  
Company History

2008  
Company History







EXHIBITION



EXHIBITION

□□□□



□□□□□□

