

FFP2 / KN95 الواقى من الغبار CE EN149 قناع حماية التنفس

KN95/FFP2 CE EN149









□□□

Seller Discount
On all products

Time left until promotion ends: 7d 0h 0m

[Shop Now](#) ▶



All details, please check it as coupon.

□□□□□□ □□□

WHY CHOOSE US?



S***
FR

★★★★★

Ships From: China Logistics: TNT

I really like this umbrella. It is sturdy, it can be opened or closed with just a press. And more importantly, almost instant dry by just shaking.

24 Dec 2018 02:24

K***
ES

★☆☆☆☆

Color: Black Ships From: China Logistics: TNT

One the metals/ribs broke after one day of use, with just light rain no wind. Very disappointing!

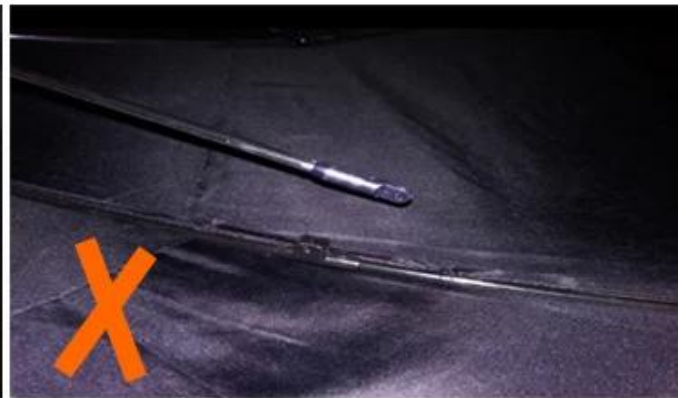
24 Dec 2018 02:24



ours



others



□□□□□ □□□□□□

OEM PROCESS

01



artwork from customer

02



make the quotation

03



make the sample for you confirmed place the order

04



mass production inspection packing

05



shipment

PRODUCTION PROCEDURES



1. EDGE STITCH



2. CUT FABRIC



3. SEWING



4. TIP ASSEMBLY



5. SEW UP



6. QUALITY CHECK

Shaoxing Lotus Umbrella Co., Ltd 19



EXHIBITION



EXHIBITION

EXHIBITION



EXHIBITION



Free design service

Factory production halls

Umbrella sample room

Quick Response...
99.9%
compared with t...
LOTUS UMBRELLA

24 hours on line.

We focus on manufacture umbrella for 19 years, we can do it better, fast.
Customized with low MOQ, Free sample, Free design, Shipping fast, Quick response

XXXXXXXXXX XXXXXXXXX

1. XXXXXXXX XXXX XX XXXX XX

XXXXXXXXXX XX XXXXXX 19 XX XXXXX XXXXXXX XXXXXXX XXXXX XXXX X XXXXXXXXX.

2. XXXXXXXX XXXX XXXX XXXXXXXXX XXXXXXX XXXXXXX XXXXXXXXX XX

XXXXXXXXXX XXXXX .XXXXXXXXXXXX XXXXXXX XXXXXXXXX XXXXXXX XXXXX XXXXX XXXXXXX XXXX X XXXXX XXXXXXX XXXXX XXXXXXXXX XXXXXXX XX XXXXX 5 XXXXX XX XXXXXXXXX XXXXXXX XXXXXXX .XXXXXXXXXXXX XXXX XXXXX.

XXXXXXXXXX XXXXX XX XX

T / T: XXXXX XXXXXXX XX70 XXXXX X XX30 XXXXXXX B / L

XXXXXXXXXXXX XXXXXXXXX XXXXXXX XX XX

ETD: XXXXXXX XXXXXXX XXXX XXXXXXX 35-25 XXXXX XX

5. XXXXXXXXX XX XXXXXXXXX XXXXX XXXX

I. XXXXX X XXXX XXXXX .XXXXXXXXXXXX XXXXXXX XXXXX XXXXX XX XXXX XXXXXXXXXX XX XXXXXXXXX XXXX XXXXXXX XXXXXXX XXXXXXX AQL 2.5 // 4.0.

B. XXXXXXXXX XXXXXXX XXXXXXXXX XXXXXXXXX XXXXX XXXXXXXXXX XXXX XXXXXXXXXX XXXX XX XXXXXXX XXXXXXXXXX XXXXXXXXX XXXXXXX XXXXXXX XXXXXXX XX XX XXXXXXXXXX XXXX.

Iii XXXXXXX XXXXXXXXX XXXXXXXXXX XXXXXXXXXX X XXXXXXX XX XXXXXXXXXX XXXXXXX XXXX XXXXXXX AQL XXXXXXX XXXXX XXXXXXXXX XXXXX XXXXXXXXXX XXXXXXXXX.